

Aaral
by Ravel



INTELLIGENT ADDRESSABLE FIRE ALARM SYSTEM 2025 PRODUCT CATALOGUE

ASIA-PACIFIC REGION'S LARGEST FIRE ALARM MANUFACTURER.

INDIA'S FIRST AND ONLY FIRE ALARM MANUFACTURER.

UL 10TH EDITION



ABOUT OUR COMPANY

Ravel Electronics Pvt. Ltd was established in 2003 and has grown to become a trusted name in the global fire and life safety industry and a market leader in Asia-Pacific's UL fire & PAVA mid-market space offering a comprehensive range of Intelligent addressable & conventional fire alarm systems, extinguishant control Panels and public address & voice alarm systems adhering strictly to stringent UL, FM and LPCB Standards. The factory is approved to stringent ISO 9001: 2015 Quality Management System standards.

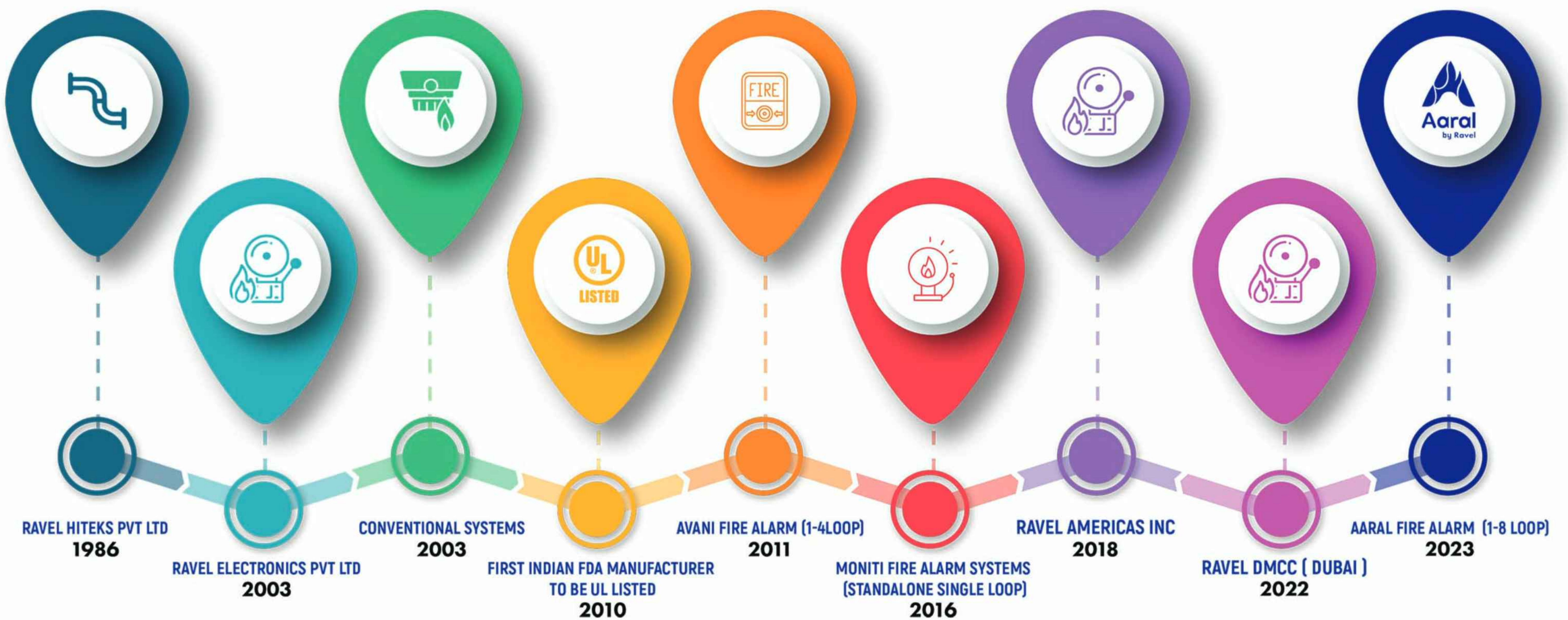
Ravel Electronics Pvt. Ltd is still the first and only Indian manufacturer and the second in Asia to obtain UL Certification for Fire alarm panels tailored to meet diverse needs and stringent safety standards

Ravel Electronics is headquartered in India with regional offices located in USA and UAE (Dubai) and employs over 400 people worldwide. Ravel has the world class 2 R&D centers employing highly skilled and experienced R&D engineers developing innovative futuristic solutions & products to cater to needs of the customers and market.

The company has a manufacturing capacity of over 60,000 panels and 5,00,000 detectors per annum covering microprocessor based intelligent addressable, conventional, gas release/extinguishing and PAVA systems- along with devices and accessories from a 100,000 square foot facility in Chennai, India

Ravel caters to more than 1 Million satisfied clients spread across 32 countries through 100+ distributors around the globe.

MILESTONE





The UL 10th edition listed Aaral Series of Analogue addressable fire alarm control system is a highly flexible, powerful & easy-to-use and maintain fire and alarm control for mid-sized and large facilities.

Features and Benefits.

- Available in 4 & 8 loop variants networkable.
- Support 250 devices of any combination in a loop.
- Ready out-of-the-box for easy installation.
- Networkable up to 16 panels supporting 32000 devices on a single peer to peer network.
- Loop powered sounders & sounder-strobe- reduced Installation costs.
- Large 4.3" color graphical TFT display for easy, intuitive operation.
- Conveniently located USB port simplifies the transfer of panel information and programming.
- Facility to monitor and control the fire alarm panels through GUI.

AARAL X4/X8

4 & 8 Loop Addressable Fire Alarm Control Panel



- UL Listed 864 10th Edition.
- Ready out of the box for easy installation.
- Available in 4 & 8 loop variants networkable upto 16 panels (16 Kms peer to peer network).
- Support 250 devices of any combination in a loop.
- 8 loop panel supports 2000 devices on one panel and 4 loop panel supports 1000 devices in one panel.
- Support 32000 devices of any combination on a single peer to peer network.
- Large 4.3" color graphical TFT Display.
- Compatible with loop powered sounders and sounder-strobes.
- Auto learn feature for faster programming of new devices.
- Supports 10,000 events logs.
- USB interface for PC connectivity.
- 999 event queues for each type of Alarm, Supervisory, and Fault for ease & access.
- Maximum 2,000 groups with inter-panel group facility.
- Pre-alarm facility, Alarm Verification facility, Configurable Day / Night mode.
- Programmable auto silence facility, Programmable AC loss delay, Programmable silence inhibits.
- Two programmable inputs: one for remote fire / conventional zone and another one for remote Fire.
- Two numbers of supervised synchronized NAC's.
- Available in red, black and white color variants.
- Aaral X4 (400W x 550H x 124D) mm, Aaral X8 (494W x 720H x 124D) mm.
- IP Rating: IP50.

AARAL RP

Addressable Repeater Panel

- Listed to UL 864 10th Edition.
- Active repeater.
- 10,000 events log with RTC (real time clock) per each node with distributed. different search option.
- Programmable auto silence facility, Programmable silence inhibits.
- Programmable reminders for alarm, supervisory and fault.
- One Form C fault relay.
- All field wiring are power limited and supervised.
- USB 2.0 interface for PC connectivity.
- Network Interface Card (NIC) Optional.
- IP Rating: IP50.



RE-551P

Addressable Manual Pull Station

- Complies UL 38 8th edition.
- Dual action pull station.
- DIP Switches for addressing.
- Inbuilt isolator.
- Dual Action - Lift and push.
- Status indicator.
- Key lock access.
- IP Rating: IP40.

RE-557P series

Addressable Manual Pull Station

- Complies to UL 38 8th edition.
- Dual action pull stations.
- Painted Die Cast Housing.
- Corrosion Inhibited surfaces.
- DIP Switches for addressing.
- All stations offer hex screw or key lock access.
- Inbuilt isolator.
- Compatible to single gang box.
- 10 A, 120VAC snap Action Switch (S.P.S.T.).
- Enclosure Complies IP40 as per IEC standard 60529.



RE357 Series

Addressable Detectors

- UL listed and NFPA standard.
- 3 models covering optical smoke, heat & multi-criteria (smoke and heat) available
- Polarity free, and Dual LED's for 360° visibility.
- Address set by 8-digit DIP switch.
- Fixed Temperature and Rate of rise detection.
- Advanced detection and communication protocol.
- Easy to install.
- Sleek low-profile housing design.
- Regular 100mm base.
- Sleek low-profile housing design, White Color (RAL 9016).
- IP Rating: IP42.

RE-314 / RE-314C

Addressable Detector Base

- Base portfolio includes standard base and isolator base.
- Secure mounting to all surfaces.
- Flexible mounting pitch.
- Different diameter sizes for various hole sizes.
- High profile models with conduit entry points.
- Cable entry points through the rear of the base.
- Plated contacts for durable connection to detectors.
- Fitted square washer for easy and reliable cable clamping.
- Terminals suitable for 0.4 mm² - 2.5 mm² diameter wiring.
- The detector bases have additional features such as remote indicator or sounder or alarm relay outputs.



RE-428DU-A

Addressable Duct detector

- Highly efficient single sampling tube.
- Easy to install.
- One-pipe air sampling system.
- Sampling tube available in different lengths 1, 2, 5 & 9 feet to match all size of ducts.
- Patented venturi pipe and duct housing.
- Test hole on cover.
- Simple installation, Simple service and maintenance.
- Device addressing via 8 way DIP switch.
- IP Rating: IP54.



RE-428FR/HR

Optical Beam Detector

- LPCB approved.
- User Friendly Installation.
- In built laser light for easy alignment.
- Supports 50 & 100 meter range.
- Option for Remote Indication.
- Adjusting Screws at detector for precise alignment.
- Infrared transmitter & receiver located in a single housing.
- In built drift compensation for monitoring dirt build up on the optical system.
- Sensitivity Threshold :- 18% ,30%, 50%.
- IP Rating: IP50.

RE-757 Series

Addressable Modules

- Complies UL 864 10th edition.
- Status LED.
- DIP switch for addressing.
- Inbuilt isolator.
- Single gang box.
- SLC communication with the panel.
- IP Rating: IP50.



○ RE-757C – Control Module.

- Supervised 24 VDC.

○ RE-757R – Relay Module.

- 1 Form C, Potential Free Contact.

○ RE-757X – Input Output Module.

- Supervised Contact Monitoring Circuit.
- Form C, Potential Free Contact.

○ RE-757M – Monitor Module.

- Supervised Contact Monitoring Circuit.

○ RE-757R2 – Dual Relay Module.

- 2 Form C, Potential Free Contact.

○ RE-757X2 – Dual Input Output Module.

- 2 Supervised Contact Monitoring Circuit.
- 2 Form C, Potential Free Contact.

○ RE-757M2 – Dual Monitor Module.

- 2 Supervised Contact Monitoring Circuit.

○ RE-757Z – Zone Module.

- Supervised 24V Input & Resettable 24V output.
- Supervised Class B Initiating Device Circuits.
- 2 / 4 wire conventional detector interface facility.

RE-657SO / 658SO

Addressable Sounders

- Complies to UL464.
- Ultra-low current & high dB output.
- Configurable Volume- low/High.
- 7 Different tone selection by using DIP switch.
- Addressing by 8-way DIP switch.
- Inbuilt isolator.
- Sound Level at 3 meter 85Db @ 24V.
- All Tones are Synchronizable.
- 2 & 4 Wire Sounders are available.
- IP Rating: IP60.



RE-657SS / 658SS

Addressable Sounder-Strobe

- Complies to UL464, UL1638, UL1971.
- Ultra-low current & high dB output.
- Configurable Volume- low/High.
- 7 Different tone selection via panel.
- Configurable as only sounder/sounder cum strobe/only strobe.
- Addressing by 8-way DIP switch.
- Inbuilt isolator. • Flash duration 20 ms.
- Sound Level at 3 meter 85Db @ 24V.
- Candela Low and High selection.
- Sounder and strobe OFF facility.
- 2 & 4 Wire Sounder-Strobes are available.
- The low frequency 520 Hz signal is unique, and is ideal for hotels, dormitories, and other sleeping occupancies.
- IP Rating: IP60.

RE-677SO | 678SO

Addressable Ceiling Mount Sounder

- Complies to UL464.
- Ultra-low current & high dB output.
- Ceiling Mount type.
- All Tones are Synchronizable.
- The low frequency 520 Hz signal is unique, and is ideal for hotels, dormitories, and other sleeping occupancies.
- Addressing by 8-way DIP switch.
- 7 Different tone selection via panel.
- Slim and sleek.
- Sounder volume low / high facility.
- 2 & 4 Wire Sounders are available.
- IP Rating: IP60.



RE-657ST / 658ST

Addressable Strobe

- Complies to UL464, UL1638, UL1971.
- Ultra-low current.
- Addressing by 8-way DIP switch.
- Inbuilt isolator.
- Candela Low and High selection.
- Flash duration 20 ms.
- 2 & 4 Wire Strobes are available.
- IP Rating: IP60.



RE-757RT

Protocol Converter



- Give full details of inputs and outputs of FACP.
- LED for indicating power and transceiver status.
- The protocol converter has 3 Inputs USB, RS485, Contact Inputs.
- Configurable 2 Output mode RS485 Modbus and TCP/IP - Modbus / PC Software.
- 10/100M auto sensing Ethernet mini card for embedded device networking.
- TCP Server & UDP driver operation modes.
- Low power consumption.
- IP Rating: IP50.

AARAL SOFT

Graphic Software

- Pop up for any events like fire, fault, power fault, etc.
- Event Fetch from fire alarm control panel facility.
- Single / Multi Mode Floor Configuration facility.
- Floor Configuration using JPEG Files.
- Event log with configurable report facility.
- Remote Monitoring facility.
- User friendly with windows-based software.
- Allows full client-server facility.
- Multi-Mode (Ethernet / USB)Communication Facility.
- Facility to monitor and control the fire alarm control panels from a single window.
- Unambiguous Visual & Audible alerts for fire and fault conditions.



RE-PS5

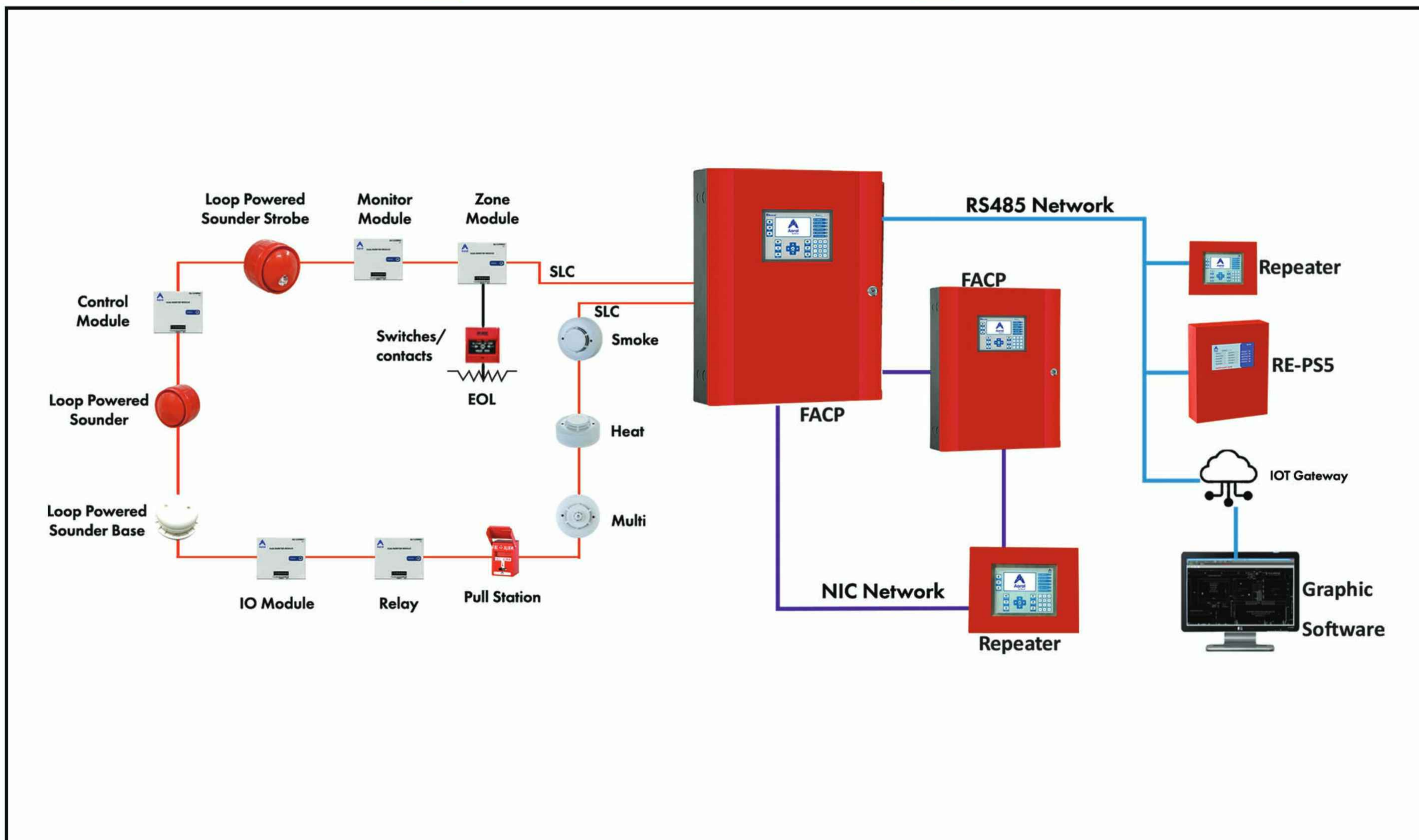
NAC Extender Power Supply



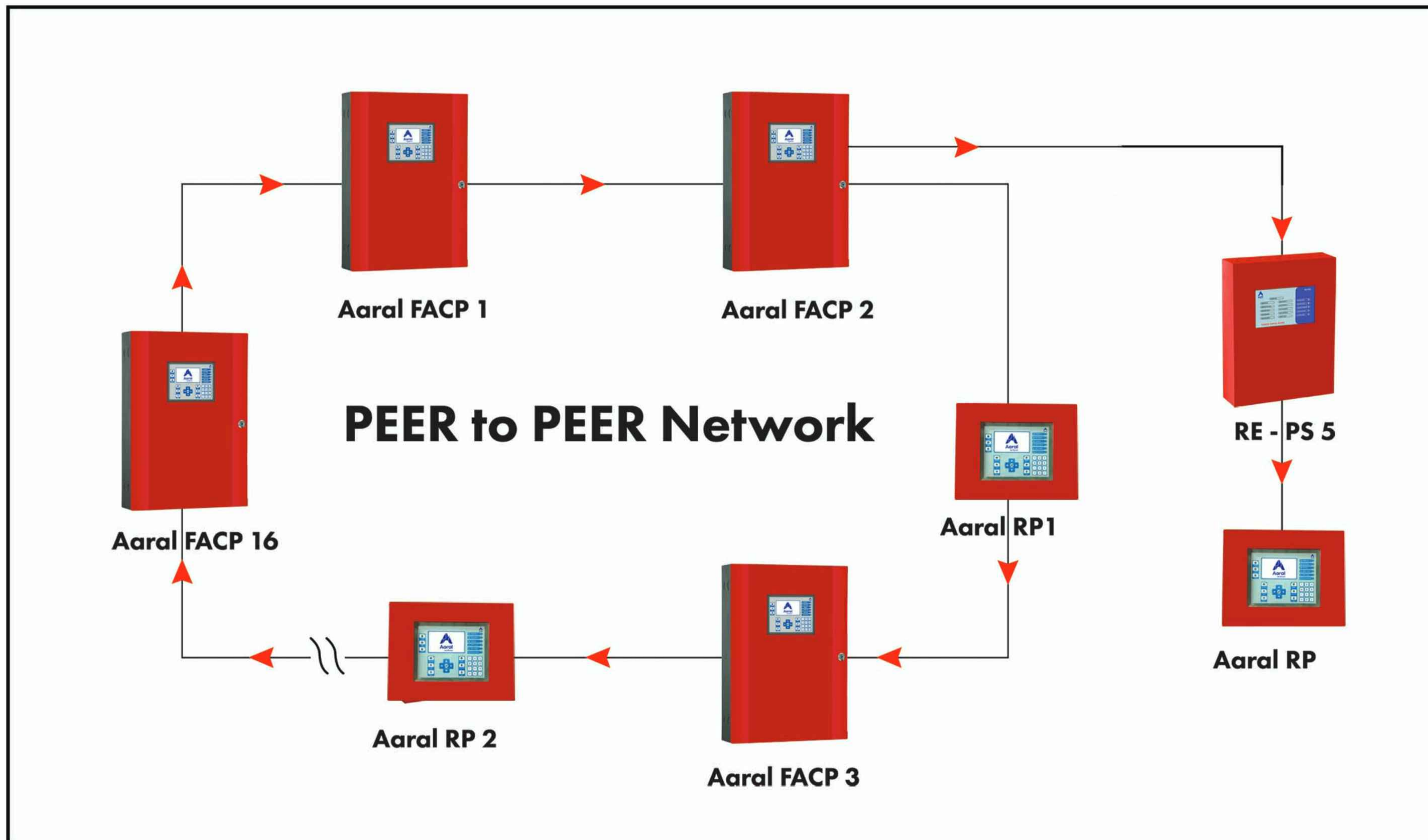
- Listed to UL 864 10th edition.
- Operates on 110 – 230 VAC.
- System ON, Mains and standby status indication.
- Standby battery backup with built in charging.
- One remote alarm input.
- One Form-C Common fault relay.
- 2 No's of 24VDC output with short circuit protection.
- 2 No's of NAC output with short circuit protection.
- AC Loss Delay facility.
- Auto Silence facility.
- Trouble Reminder facility.
- All field wiring is power limited and supervised except battery and AC Input.
- Inbuilt Keys for Acknowledge & Restart.
- Ground fault detection facility @ 0 Ohms.
- Inbuilt RS 485 Bus communication.
- Addressing by 8-way DIP switch.
- System(field) Configurations using 8-way DIP switch.

SCHEMATIC DIAGRAM

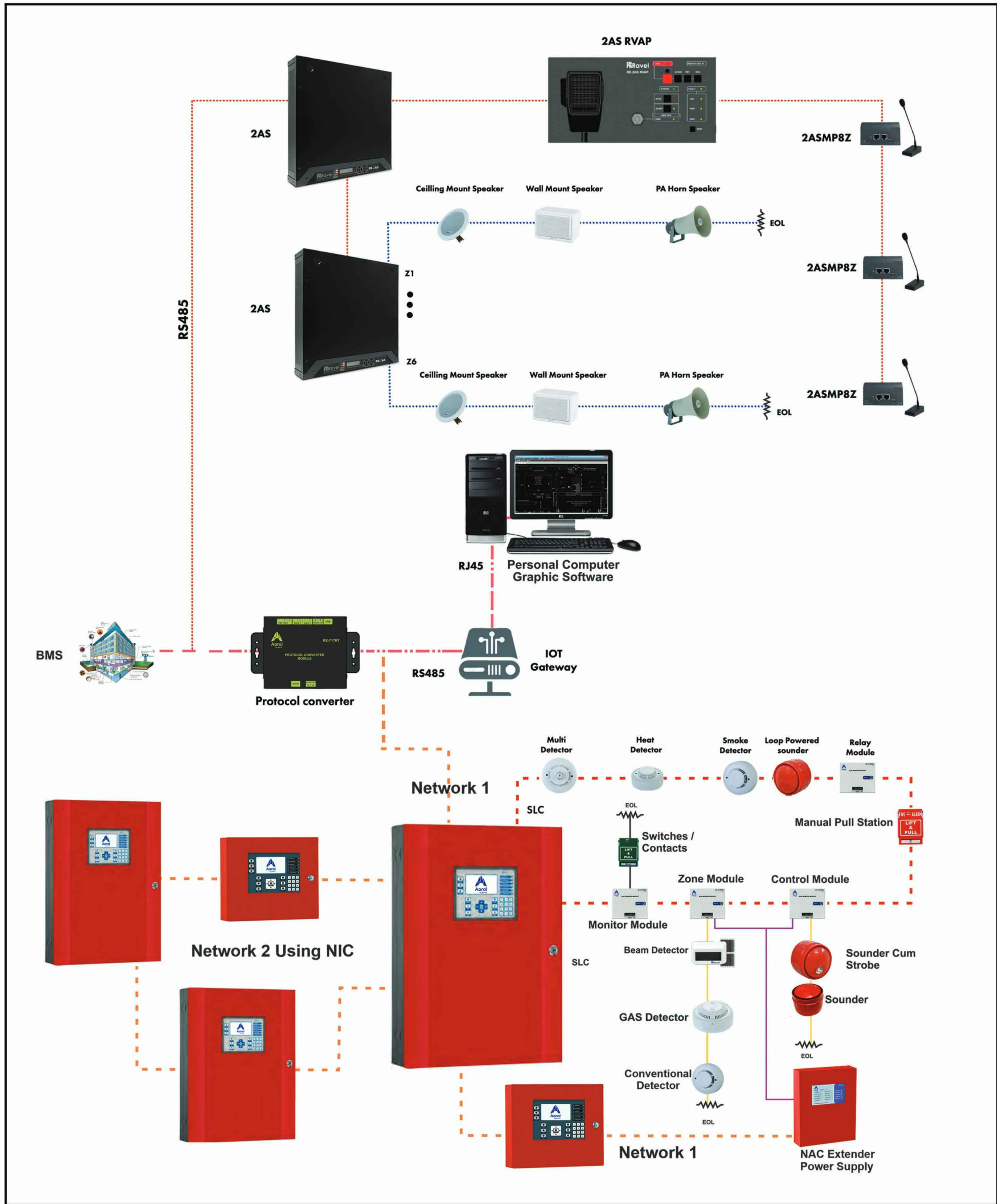
TOPOLOGY



NETWORK TOPOLOGY



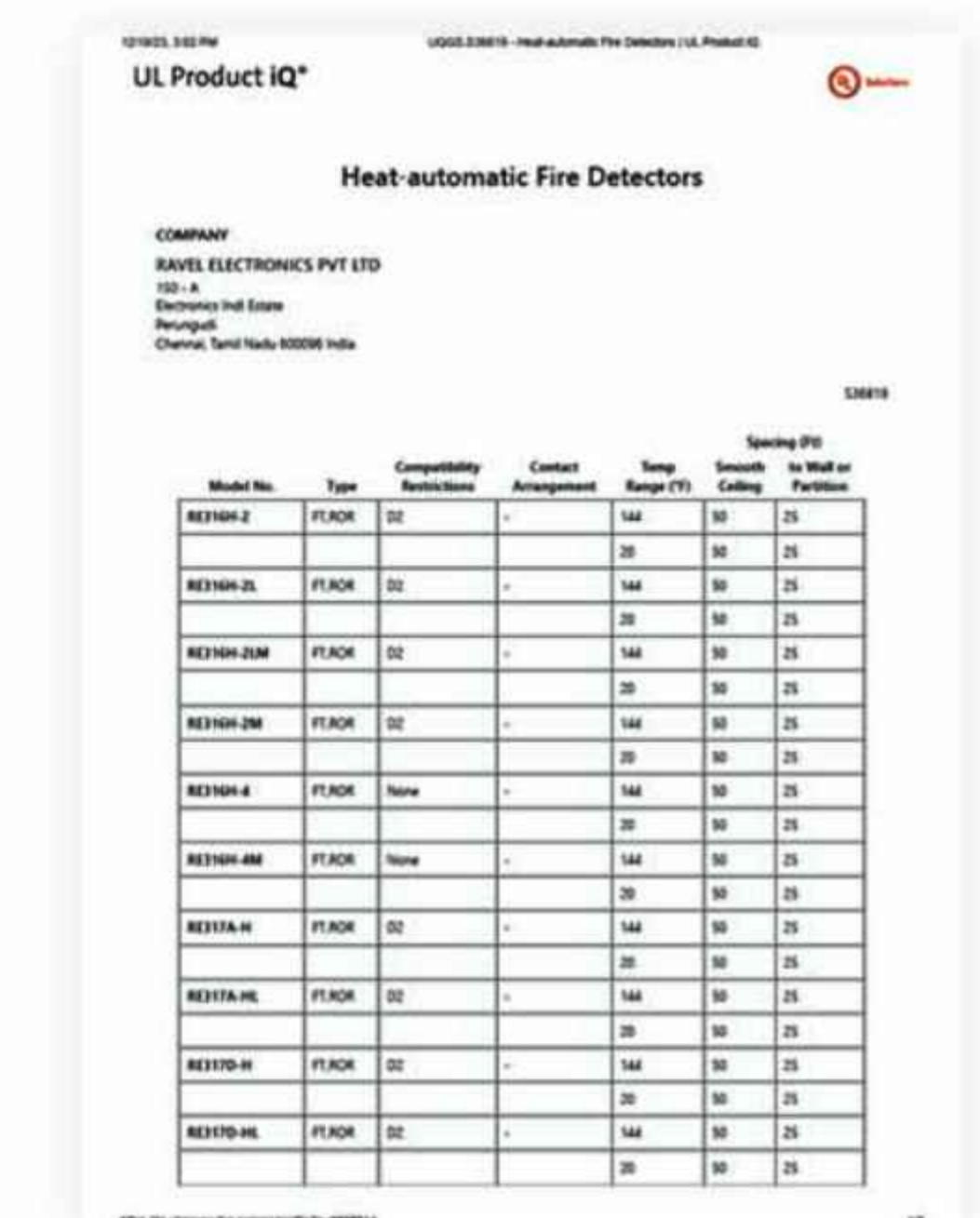
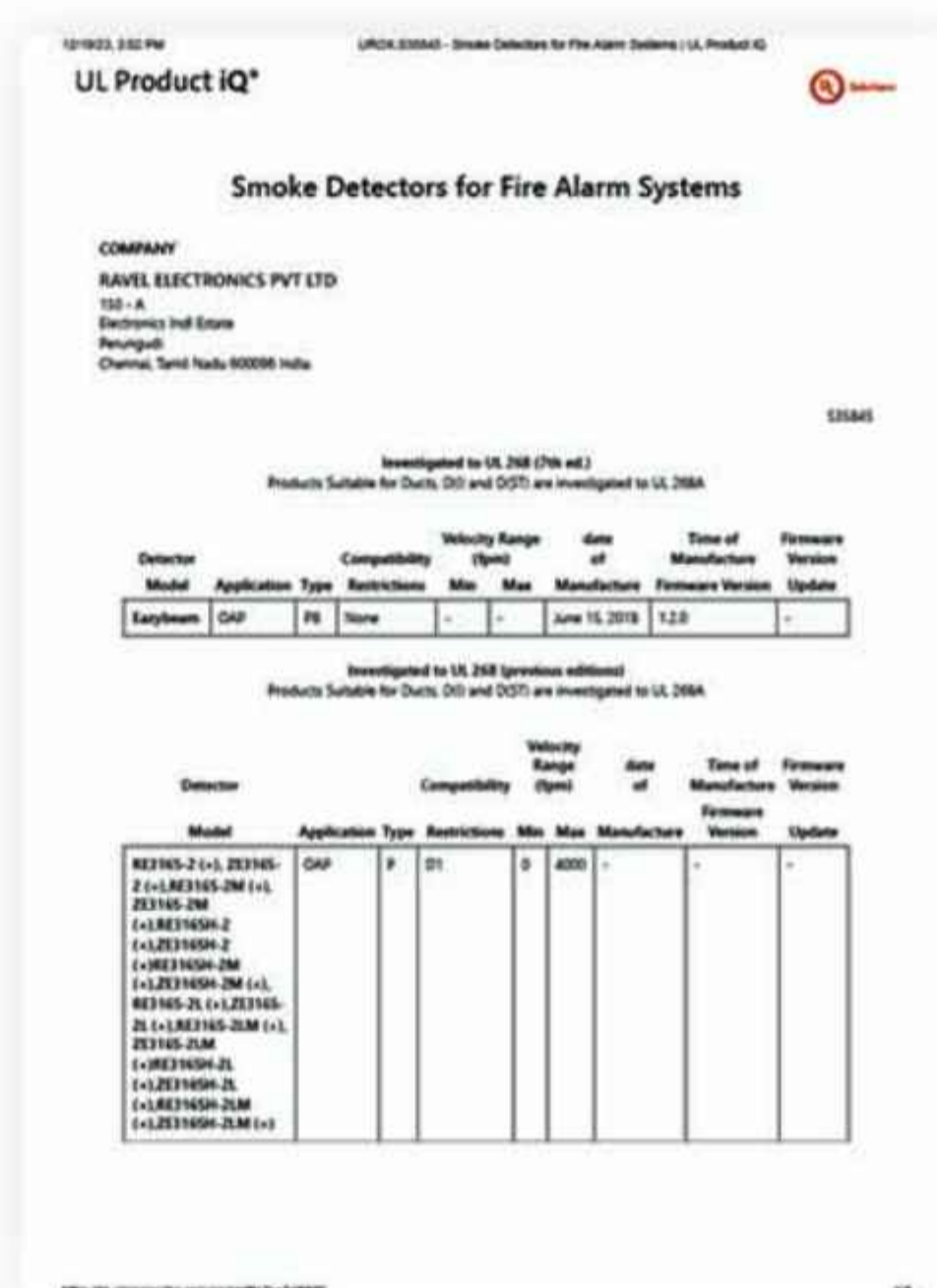
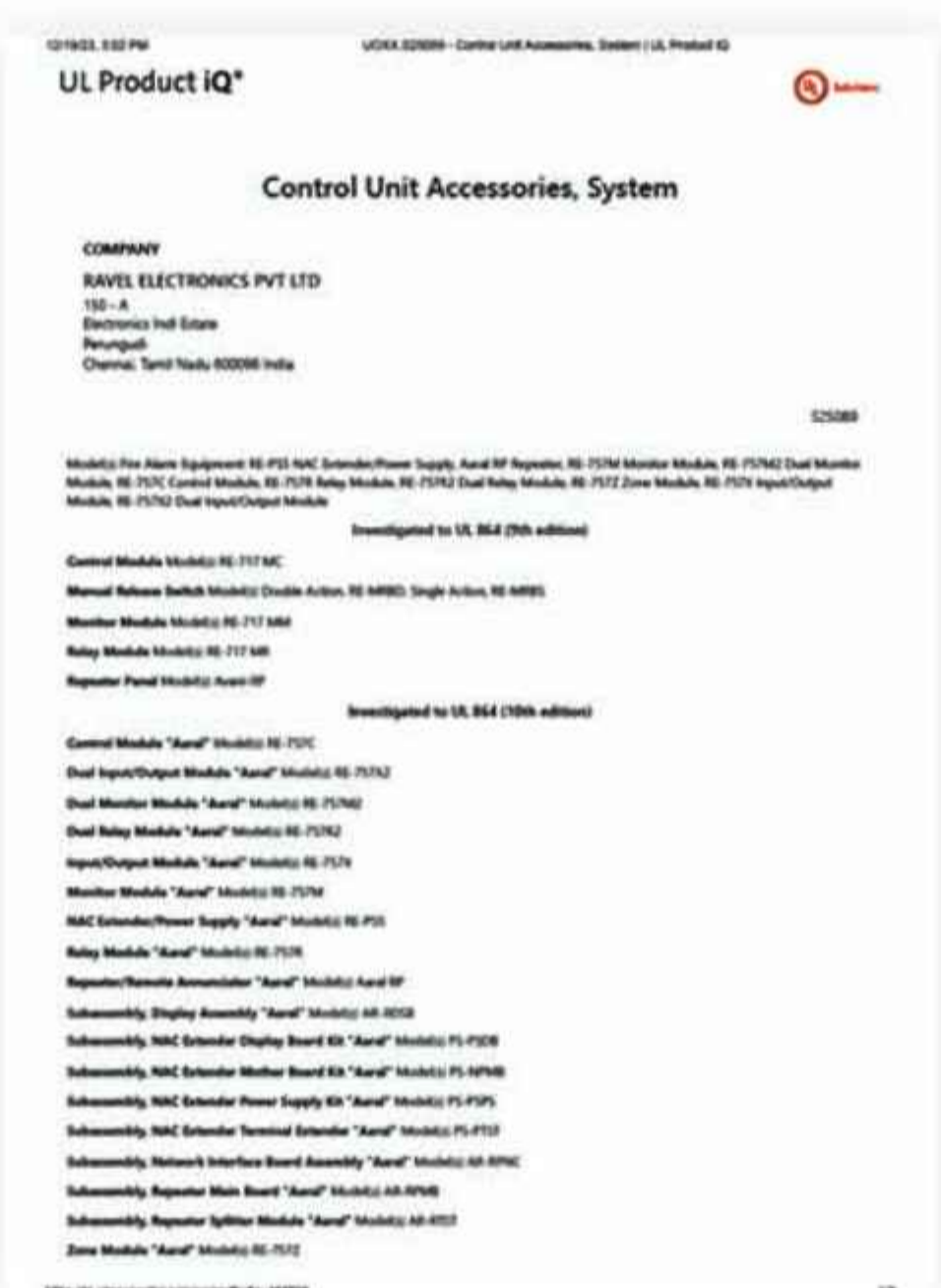
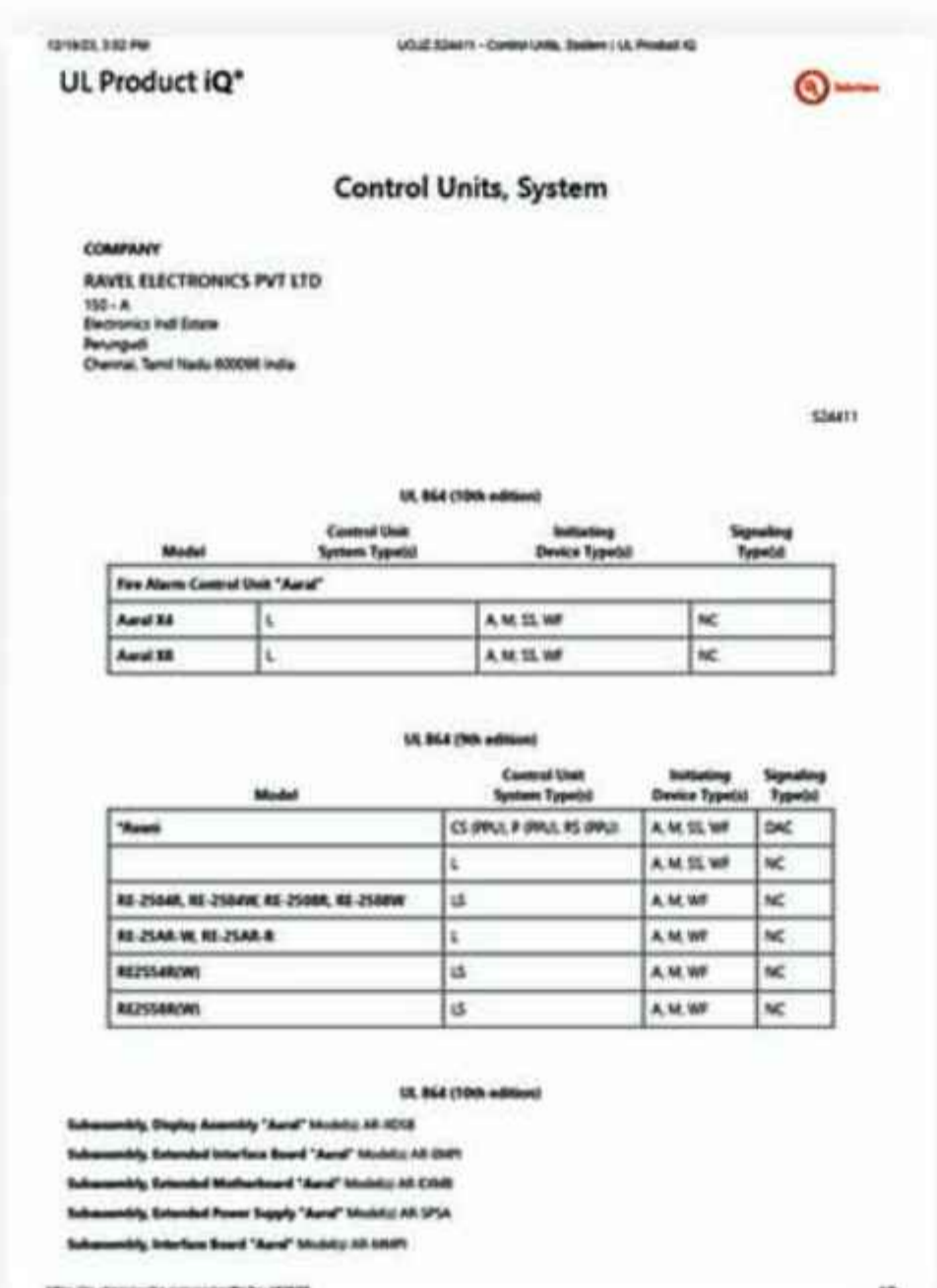
ADDRESSABLE SYSTEM



FEW OF OUR PRESTIGIOUS CUSTOMERS



OUR UL CERTIFICATIONS



OUR PURSUIT

The Aim of the company is to serve the Fire detection industry with robust, trouble free and world-class Fire Alarm Panels and Devices. The cornerstone of the personnel plan is to set the policies, recruit the team and train them intensively and effectively to cascade the vision of the organization.

OUR PRESENCE AT

RAVEL AMERICAS INC
U.S.A 

2855 NW 112th Ave Suite # 2 Miami,
Doral, FL 33172, United States


RAVEL ELECTRONICS PVT LTD
INDIA 


150-A, Electronics Industrial Estate,
Perungudi, Chennai - 600096. India

RAVEL DMCC
DUBAI-UAE 

Unit No:G30,DMCC Business centre,
Level No -13,AG Tower, Dubai, UAE

CHENNAI | MUMBAI | DELHI | BANGALORE

 sales@raveldmcc.com

 +971 56 404 7673
+971 55 656 9588

 www.raveldmcc.com
www.aaralfas.com

GET IN TOUCH!

Scan to Know More About Us

